



**GRAIN FREE
& HIGH MEAT CONTENT**

40%

**fresh
meat**

40%

**animal
ingredients**

20%

**fruits
& vegetables**

COMPLETE FOOD FOR DOGS



We make pet food healthy for generations to come !

It has been proven that our dogs and cats still share the DNA of the ancient canine or feline, and a part of the wolves one.

At Natura Wild our aim is to give to our domestic pets the food that contain all the appropriate ingredients and nutrition they need throughout life.

Moreover, we focus on last researches of nutritional epigenetics. Nutritional epigenetics seeks to explain the effects of nutrition on gene expression. Rather than the chemical conversion of food to energy and body matter of classic metabolism, food is now also a conditioning environment that shapes the activity of the genome and the physiology of the body : the kind and quantity of food eaten by an animal (is part of the factors that may change) their inside constitution at the molecular level. (*H. Landecker, Center for Society and Genetics, 2011*)

Nutrition and chemical pollutants are two important environmental factors that impact health (both human and animal).

Our responsibility as a world citizen and as petfood producer is to take it into consideration as the quality of your pet's diet is directly related to his health.

We lead, others follow !

Nature-inspired brand

Canada's forests are an inexhaustible source of raw materials. The proximity of rivers and lakes allows this ecosystem to have an important value, where the preservation of this natural environment allows us to keep an exemplary heritage.

The founder of the brand spent many years with his sled dogs in several parts of the world, kept from his stay in Canada the memory of unspoiled landscapes, the well being due to a lifestyle close to nature and an authentic way of life. This is how he developed the Natura Wild brand by formulating, with the help of veterinary nutritionists, tasty, nutritious and healthy recipes to meet the needs of our dogs without being influenced by fashion trends. We stay close to nature and our pets to provide them with what they really need.



FABRIQUÉ EN FRANCE

High meat content

Back to origin for your pet is our main goal. That's why animal proteins are at first place in all our formulas to best meet nutritional needs of your dog.



Grain free

Our recipes do not contain any cereals, are gluten free to avoid as much as possible food intolerance, allergies, gastrointestinal problems. Digestion is facilitated. Meat will remain the first ingredient for our carnivores.



Beneficial fruits, vegetables and herbs

Fruits and vegetables added in limited quantities in our recipes provide the necessary intake of vitamins, minerals and fiber. Moreover, the mixing of beneficial herbs helps to strengthen the immune system, reduce the risk of inflammation thanks to their anti-inflammatory effects and their detoxifying properties.



Goji berries

Goji berries are well known for their high nutritional value. They contain the 8 essential amino acids and have antioxidant properties to slow down the ageing. The vitamins B and E included help fight inflammation and reduce cholesterol.



Algae

The algae are rich in fiber and contribute for a well-functioning digestive system. They have also also anti-cancer, anti-inflammatory and antioxidant properties.



Nutritional benefits

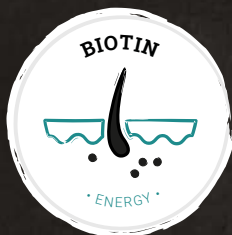
To ensure a complete and well-balanced nutrition throughout your dog's life, we select appropriate additives to ensure good metabolism.



Glucosamine and chondroitin sulfate can help cartilage from degeneration. Glucosamine has natural anti-inflammatory properties and can help improve mobility and range of motion, and slow the aging process in your dog's joints.



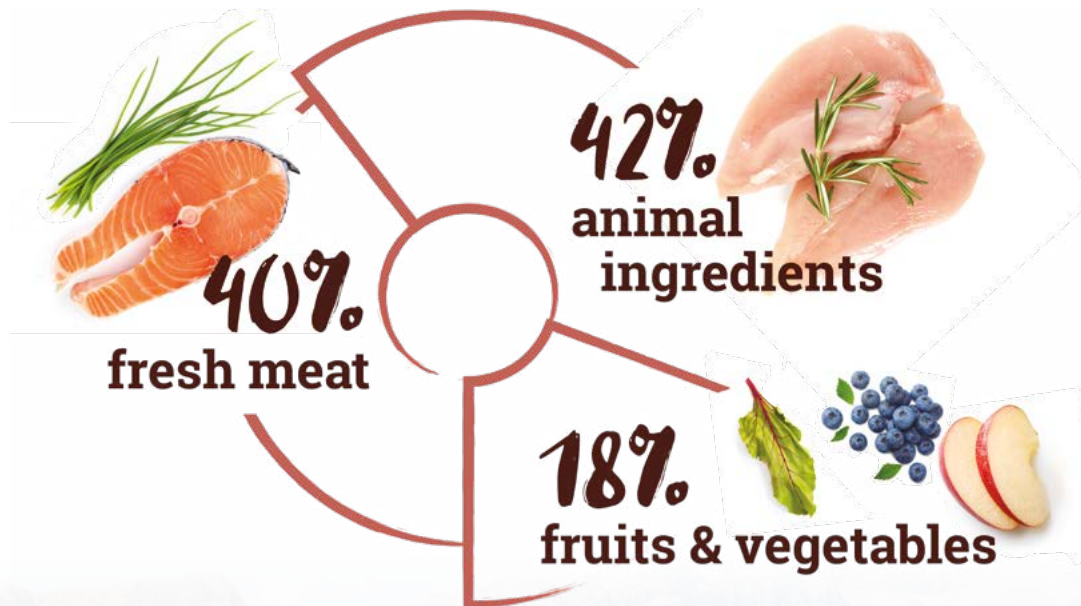
L-carnitine helps the body to transform fat into energy and has also effects on muscle mass : increase in lean mass, improve muscle recovery and less oxidative stress during strenuous exercise.



Biotin is part of the Vitamin B that is essential for protein and fatty acid metabolism. It helps the body to convert the food into energy, directly usable by the dog. Biotin supports a healthy nervous system, skin and coat.

LITTLE CREEK

Salmon, tuna & turkey





PUPPY FROM 1 TO 18 MONTHS

The growth and development of a puppy requires special nutrition. We propose balanced food that gives energy, keeps brain and body well functioning and helps him grow. Little Creek recipe contains 40% fresh meat, among which fish to provide omega-3 fatty acids, essential for the growth and development. 42% ingredients of animal origin, among which dehydrated meat and fat, give your puppy all the nutrients needed during his first months.

Composition

Salmon (fresh 40%*, dehydrated 10%), dehydrated turkey meat 20%, mix of fruits & vegetables 18% (green peas, beet pulp, seaweed, dried apples, dried cranberries, dried blueberries, dried raspberries), dried farm potatoes, poultry fat 10%, dehydrated potato pulp, dehydrated tuna meat (2,5 %), hydrolyzed animal protein, potato protein, yeast, fructo-oligosaccharide (dried chicory root), yucca, linseed, fish oil, dried herbs (nettle, chamomile, mint extract, marigold leaves, gentian, fennel), glucosamine, chondroitin sulfate. * before extrusion

Nutritional additives (per KG): Vitamin A 17.500 IU/kg, Vitamin D3 1.250 IU/kg, Vitamin E 200 mg/kg, iron 70 mg/kg, copper 8 mg/kg, manganese 7,5 mg/kg, zinc 115 mg/kg, selenium 0,05 mg/kg, iodine 1,8 mg/kg, biotin 0,195 mg/kg, L-carnitine 150mg/kg.

Analytical constituents

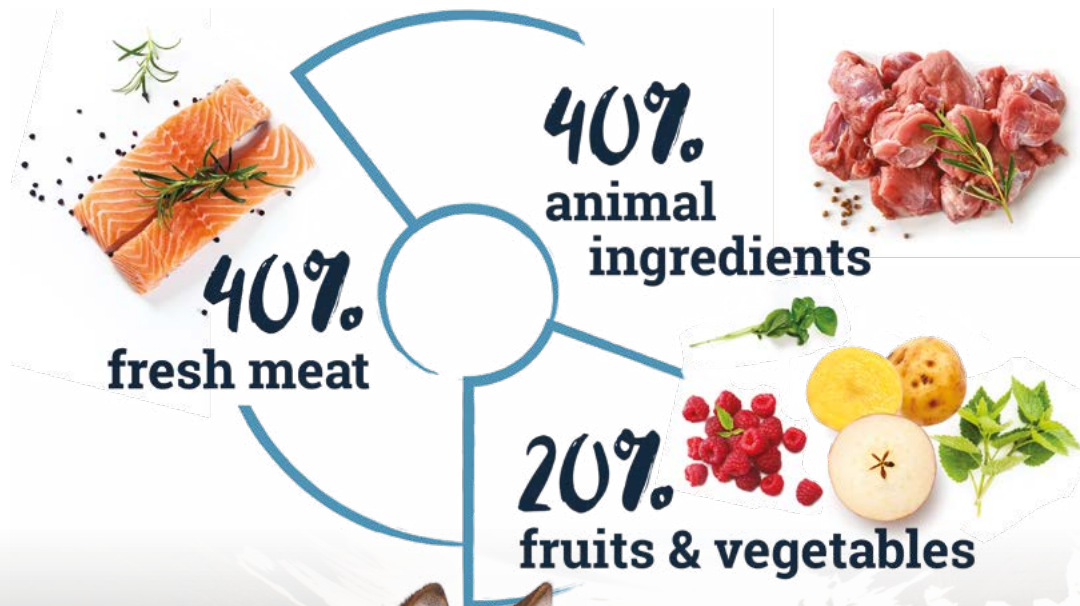
Metabolizable energy	.. 3900 kcal/kg
Crude protein 33%
Crude oils and fats 20%
Crude fibres 3,2%
Crude ash 8,5%
Calcium 1,6%
Phosphorus 1%

Benefits



YUKON LAKE

Salmon, tuna & turkey





ORIGINAL RECIPE

With 40% fresh salmon and 10% dehydrated salmon, this recipe has great benefits : as an oily fish, salmon is low saturated and very high in protein. It contains omega-3 fatty acids which support the immune system, may decrease inflammation, and can keep your dog's coat looking shiny and healthy. Enriched with L-carnitine, this recipe will meet nutritional needs of all adult dogs.

Composition

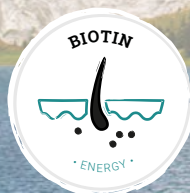
Salmon (fresh 40%*, dehydrated 10%), dehydrated turkey meat 18.5%, mix of fruits & vegetables 20% (green peas, beet pulp, seaweed, dried apples, dried cranberries, dried blueberries, dried raspberries), dried farm potatoes, poultry fat 9 %, dehydrated potato pulp, dehydrated tuna meat (2,5 %), hydrolyzed animal protein, potato protein, yeast, fructo-oligosaccharide (dried chicory root), yucca, linseed, fish oil, dried herbs (nettle, chamomile, mint extract, marigold leaves, gentian, fennel), glucosamine, chondroitin sulfate. * before extrusion

Nutritional additives (per KG): Vitamin A 17.500 IU/kg, Vitamin D3 1.250 IU/kg, Vitamin E 200 mg/kg, iron 70 mg/kg, copper 8 mg/kg, manganese 7,5 mg/kg, zinc 115 mg/kg, selenium 0,05 mg/kg, iodine 1,8 mg/kg, biotin 0,195 mg/kg, L-carnitine 150mg/kg.

Analytical constituents

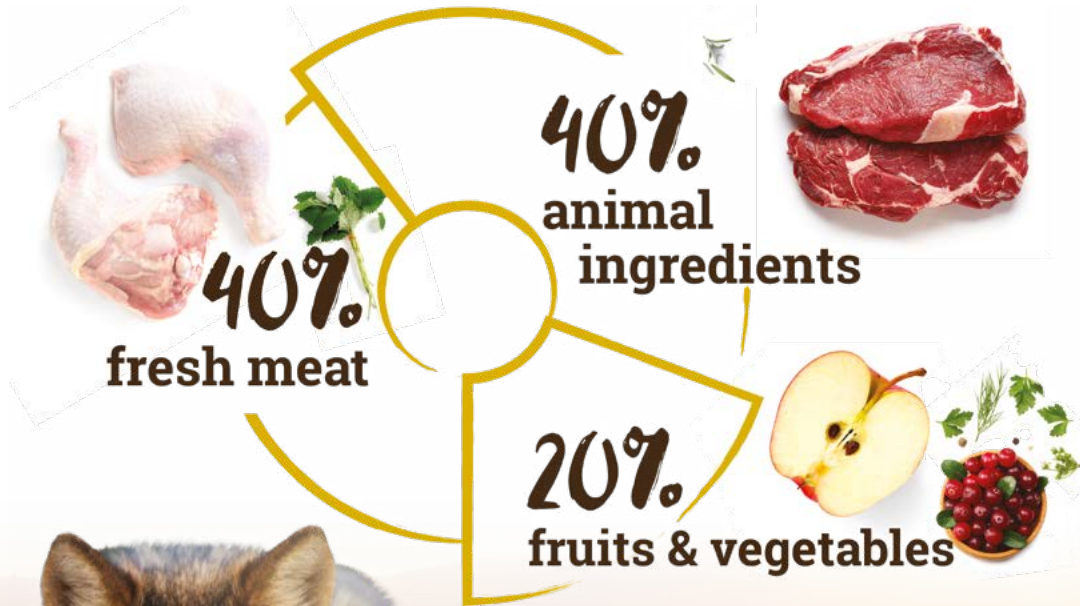
Metabolizable energy . . .	3800 kcal/kg
Crude protein	32%
Crude oils and fats	19%
Crude fibres	3,2%
Crude ash	8,5%
Calcium	1,6%
Phosphorus	1%

Benefits



MANITOBA HILLS

Poultry, duck & turkey





TRADITIONAL FLAVOR

Quality poultry meat, fruits and vegetables, enriched with L-carnitine and biotin make this recipe as a well balanced and nutritional food for all adult dogs. Goji berries are well known for their antioxidant properties and provide 8 essential amino acids. To maintain your dog healthy and in good condition.

Composition

Poultry (fresh 40%* & dehydrated 19%), duck & turkey dehydrated meat 11%, mix of fruits & vegetables 20% (green peas, beet pulp, dried apples, dried cranberries, dried blueberries, dried raspberries, dried Goji berries), dried farm potatoes, dried potato pulp, poultry fat 7%, hydrolyzed animal protein (2%), fish oil (1%), yeast, fructo-oligosaccharide (dried chicory root), yucca, dried herbs (nettle, chamomile, mint extract, marigold leaves, gentian, fennel), glucosamine, chondroitin sulfate. * before extrusion

Nutritional additives (per KG): Vitamin A 17.500 IU/kg, Vitamin D3 1.250 IU/kg, Vitamin E 200 mg/kg, iron 70 mg/kg, copper 8 mg/kg, manganese 7,5 mg/kg, zinc 115 mg/kg, selenium 0,05 mg/kg, iodine 1,8 mg/kg, biotin 0,195 mg/kg, L-carnitine 150mg/kg.

Analytical constituents

Metabolizable energy . . .	3700 kcal/kg
Crude protein	27%
Crude oils and fats	14%
Crude fibres	3,5%
Crude ash	7,5%
Calcium	1,4%
Phosphorus	0,95%
Magnésium	0,1%

Benefits



NORTH COUNTRY

Poultry, duck & turkey





LIGHT AND FIT

Enriched with L-carnitine, the quality protein promotes the building of lean muscle and safely reduces body fat. Goji berries are well known for their antioxidant properties and provide 8 essential amino acids. Recommended for overweight dogs and adult dogs who need low protein and fat content.

Composition

Poultry (fresh poultry 40%* & dehydrated poultry 16%), duck & turkey dehydrated meat 21% (including poultry fat 7%), mix of fruits & vegetables 20% (green peas, beet pulp, dried apples, dried cranberries, dried blueberries, dried raspberries, dried Goji berries), dried farm potatoes, potato pulp, hydrolyzed liver 2%, fish oil (salmon 1%), yeast, fructo-oligosaccharide (chicory root), yucca, dried herbs (nettle, chamomile, mint extract, marigold leaves, gentian, fennel), glucosamine, chondroitin sulfate. *before extrusion

Nutritional additives (per KG): Vitamin A 17.500 IU/kg, Vitamin D3 1.250 IU/kg, Vitamin E 200 mg/kg, iron 70 mg/kg, copper 8 mg/kg, manganese 7,5 mg/kg, zinc 115 mg/kg, selenium 0,05 mg/kg, iodine 1,8 mg/kg, biotin 0,195 mg/kg, L-carnitine 150mg/kg.

Analytical constituents

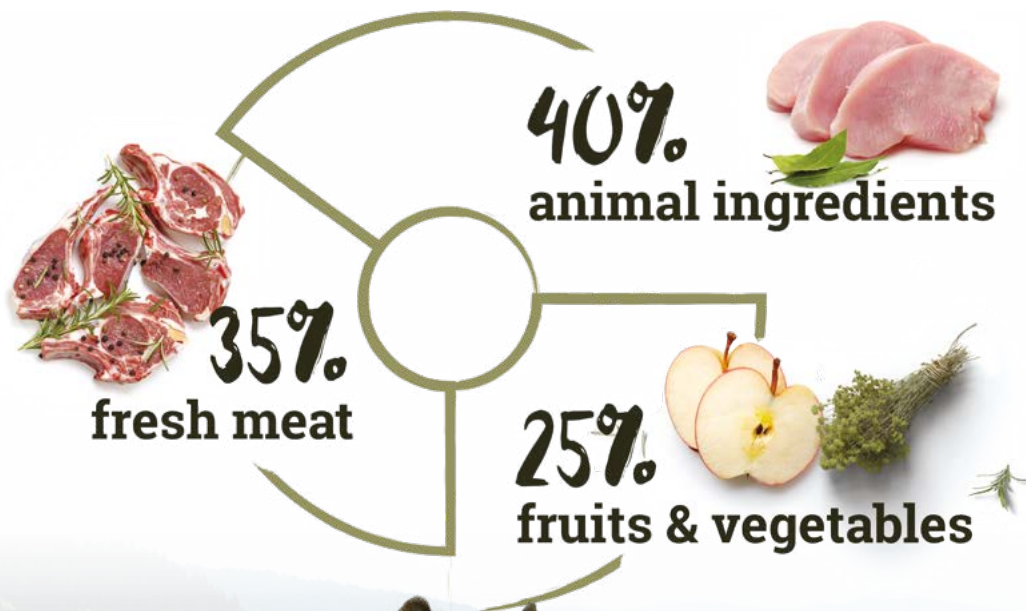
Metabolizable energy . . .	3600 kcal/kg
Crude protein	25%
Crude oils and fats	14%
Crude fibres	3,5%
Crude ash	7,5%
Calcium	1,4%
Phosphorus	0,95%

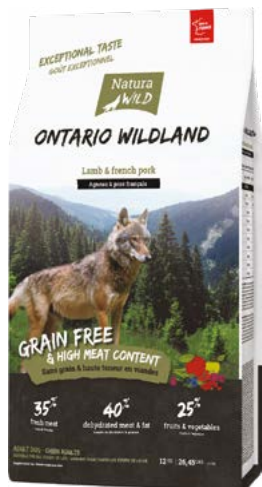
Benefits



ONTARIO WILDLAND

Lamb & French pork





EXCEPTIONAL TASTE

An original and exceptional combination of lamb and French pork meat for high palatability and well balanced diet for all adult dogs. Many dogs love lamb meat which is an excellent source of high-quality protein and essential amino acids and thus considered a very good biologically appropriate meat source. Does not contain fish to meet the needs of dogs who may have an intolerance to fish.

Composition

Lamb meat (fresh 35%* & dehydrated 16%), dehydrated meat 11% (including French pork), mix of fruits & vegetables 25% (green peas, beet pulp, dried apples, dried cranberries, dried blueberries, dried raspberries), dried farm potatoes, poultry fat 10%, potato protein, dried potato pulp, yeast, hydrolyzed animal protein (2 %), fructo-oligosaccharide (dried chicory root), yucca, dried herbs (nettle, chamomile, mint extract, marigold leaves, gentian, fennel), glucosamine, chondroitin sulfate. *before extrusion

Nutritional additives (per KG): Vitamin A 17.500 IU/kg, Vitamin D3 1.250 IU/kg, Vitamin E 200 mg/kg, iron 70 mg/kg, copper 8 mg/kg, manganese 7,5 mg/kg, zinc 115 mg/kg, selenium 0,05 mg/kg, iodine 1,8 mg/kg, biotin 0,195 mg/kg, L-carnitine 150mg/kg.

Analytical constituents

Metabolizable energy . . .	3800 kcal/kg
Crude protein	31%
Crude oils and fats	18%
Crude fibres	3%
Crude ash	7,8%
Calcium	1,5%
Phosphorus	1%

Benefits



The brand born out of passion

True to our passion we put our know-how at the services of high-quality nutrition for generations to come. Staying away from fashion and marketing effects, we resolutely are focused on the healthiest and most authentic way of feeding our dogs.

Our specifications are: balanced and diversified protein content, hypoallergenic ingredients non contaminated with petrochemicals, optimization of nutritional benefits through the selection of nutritious raw materials, diversification of animal protein sources. We are convinced that the dog remains the best friend of man and our goal is to take care of him as well as possible.



hello@natura-wild.com
www.natura-wild.com

Naturally owned by Oasis-Shadrin Group